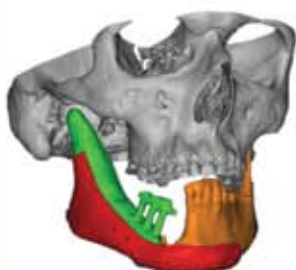




Cranial bone implants



Cranial bone implants



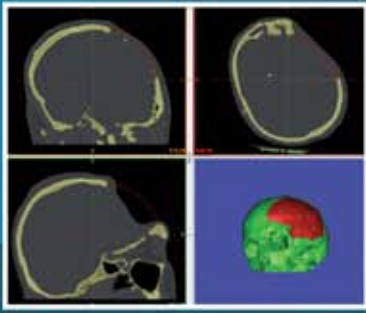
Custom-made implants

Neurosurgery – cranioplastic, large bone defect correction

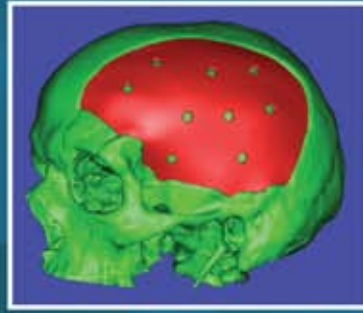
Maxillo-facial surgery – implants for bone defect correction

Plastic surgery





1. CT Scan sent to manufacturer



2. Image Data Processing, 3D model



3. Individual design, plastic model



4. Final approval by implanting surgeon



5. Manufacturing, cleaning, sterilization



6. Implantation and recovery

Basic description

Indications

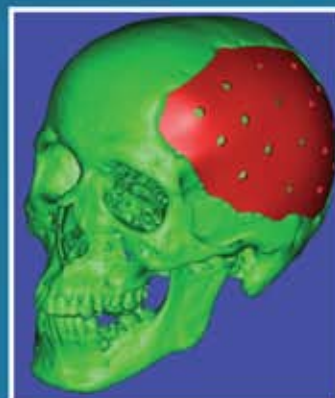
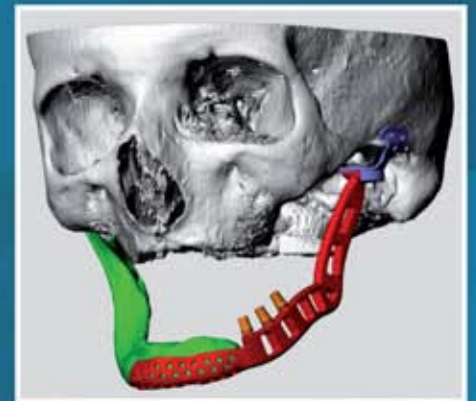
Maxillo-facial surgery, neurosurgery, plastic surgery typically after car accidents, bone defects after oncologic treatment (tumours), large bone defects, cranioplasty

Materials

UHMWPE polyethylene
PEEK poly-ether-ether-ketone
Titanium Ti6Al4V ELI
Casting mould – PMMA

Timeline

4 – 8 weeks



Manufacturer:

ELLA-CS, s.r.l.
Mladý Horákov 504, 500 06 Hradec Králové
Czech Republic

Tel.: +420 495 279 111 Fax: +420 495 265 655
E-mail: info@ellacs.eu URL: www.ellacs.eu

Cooperating Company:

DUO CZ, s.r.o.
Na Olive 467, 517 73 Opocno
Czech Republic

Tel.: +420 494 667 486 Fax: +420 494 667 488
E-mail: duocz@duocz.cz